

# Step Into PMI Infinity™: From Demo to Doing

3 May 2026 | 9:00 – 10:00

PMI Culture Value: Embrace Curiosity

**Keriann Sabatini**

AI Product Manager, B2C

**Dirk Withake**

PMI Austria Chapter President

**Kathleen Walch**

PMI Global Director, AI Engagement & Community

# Content and Innovation Platforms

Shaping the Future of the Profession

M.O.R.E. Together

Gigaprojects

AI

Agile

PMOs



Sustainability

Change Management

Product Management

Social Impact

## Agile

---

We champion modern, human-centered Agile practices beyond software development, advancing Enterprise Agility in an AI-accelerated world.

## AI

---

We lead the AI transformation of project management and the project management of AI transformations.

## Sustainability

---

We lead the integration of sustainability and regeneration practices into all projects. We lead the project management of the global transition to a more sustainable world.

## Social Impact

---

We advance opportunities for youth and strengthen nonprofit organizations through education and partnerships.

## Gigaprojects

---

We lead large-scale project delivery, connecting leaders, ideas, and solutions to help the world's biggest projects achieve stronger outcomes, better governance, and greater long-term impact.

## PMOs

---

We exist to elevate PMO professionals worldwide and advance the evolution of PMO practice.

## Change Management

---

We empower professionals to lead change projects that drive meaningful transformation and impact.

## Product Management

---

We bridge project and product disciplines to help professionals deliver greater value from idea to impact.

## Agile

**Practitioner created body of knowledge- Agile Manifesto** shaped by a global, practitioner-driven community and grounded in real-world experience.

Community, certifications, and events: Professional growth through **Agile certifications such as PMI-ACP®**, **learning resources**, and **practitioner-centric global and regional events that share what works in practice**.

Closing the gap between **practitioners and enterprise leaders**, **providing credible practitioner insight enterprises can adapt across teams, products, and organizations**.

## Social Impact

**Applying project management skills and skill-based volunteerism to make a difference in communities.** Social Impact Programs (SIPs) exist to connect project management expertise, volunteers, and resources with real-world needs:

**PMIEF** educates and inspires the next generation by equipping youth with project management skills focusing on UNSDG 4: Quality Education.

**PMWB** empowers and scales impact by connecting skilled project managers with nonprofits and NGOs to build organizational capacity to amplify mission-driven outcomes."

## AI

The leading certification for managing AI projects: **PMI-CPMAI™**

Your AI-powered project coach: **PMI Infinity™**

**eLearning, Thought Leadership, AI standard, AI Today podcast, and Practice Guides** to build knowledge and confidence for navigating the AI disruption.

**A community of practitioners sharing their expertise and experience.**

## Gigaprojects

**Gigaprojects are the world's most ambitious undertakings**, and its most consistent failures. 72% exceed budgets. 73% face delays. \$127M wasted per \$1B spent. The trillion-dollar industry urgently needs standardised, globally recognised competency.

**PMI-CP credentials**, practical delivery research, and **a powerful network of leaders and partners is driving the shift to consistent, high-performance construction outcomes worldwide**. As part of the Gigaprojects environment, PMI-CP addresses the key issues by listening to the industry and providing a solution.

## Sustainability

**Sustainability is the higher predictor of project success.** However, less than 5% of projects considers all dimensions (social, environmental, and economic) PMI-GPM offers:

The methodology to deliver social, environmental and economic value in every project: **P5 Standards™**, **Practice Guide™**, **Competence Standard™ and Sustainability Reporting Guide™**

The leading certification: **Certified Sustainable Project Professional, CSPP™**

**An elite community of professionals closing the sustainability talent gap and promoting regenerative change** (events, Thought Leadership, recognition)

## PMOs

**PMI-PMOCP™** : The leading certification for managing **PMO leaders**

**PMO Practice Guide:** Reference for PMO leaders and professionals seeking to strengthen their PMO's impact and value

**Learning experiences:** PMO Masterclass.

**Thought leadership:** PMO Global Survey Report.

**Events :** virtual and in person PMO events.

**Community:** online community platform and volunteering opportunities.

**Recognition:** PMI PMO of the Year.

# Disclaimer

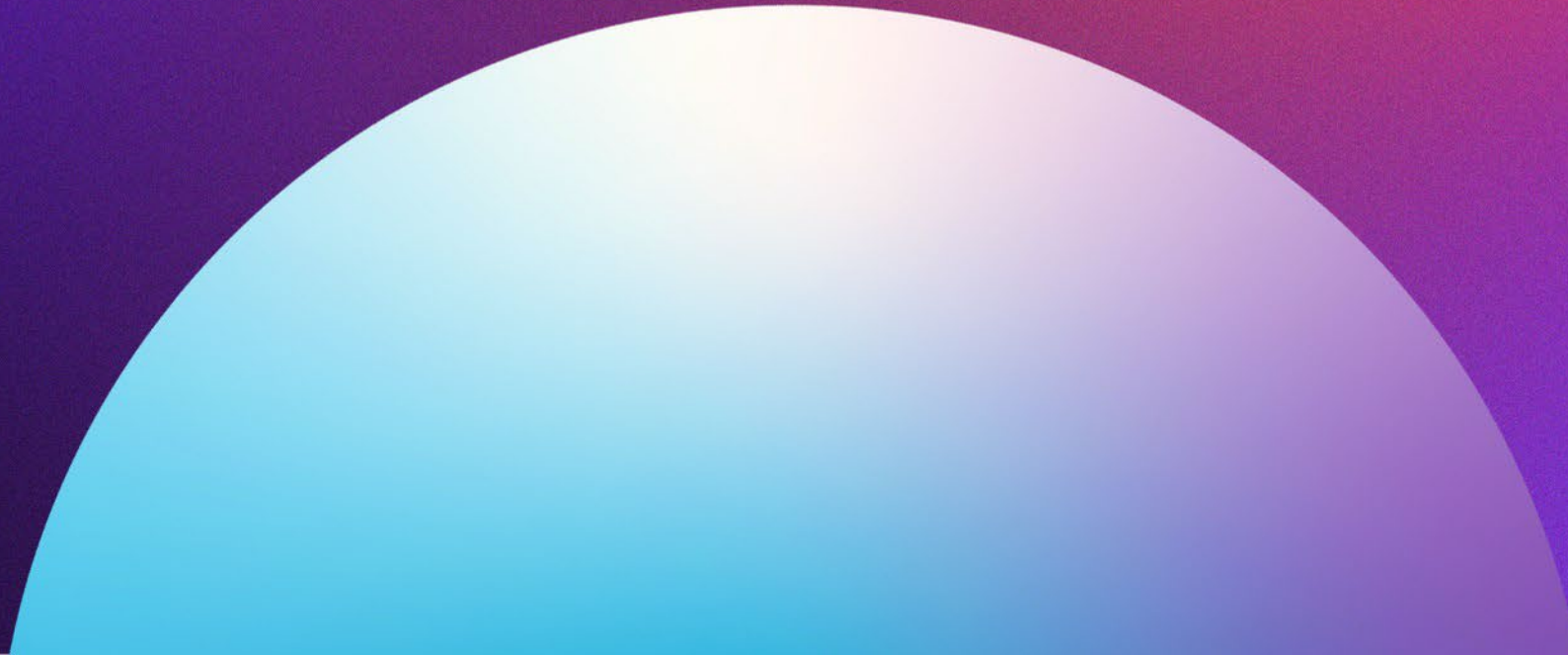
- The views and opinions expressed in the following presentation are those of the individual presenter/s.
- When used, slides are protected under the copyright laws of the United States of America and other countries. Used by permission. All rights reserved. Project Management Institute and PMI are registered trademarks. All other trademarks are the property of their respective owners.
- This presentation is for registered attendees of Europe LIM 2026.

# Learning Objectives

At the conclusion of this session, attendees will be able to understand:

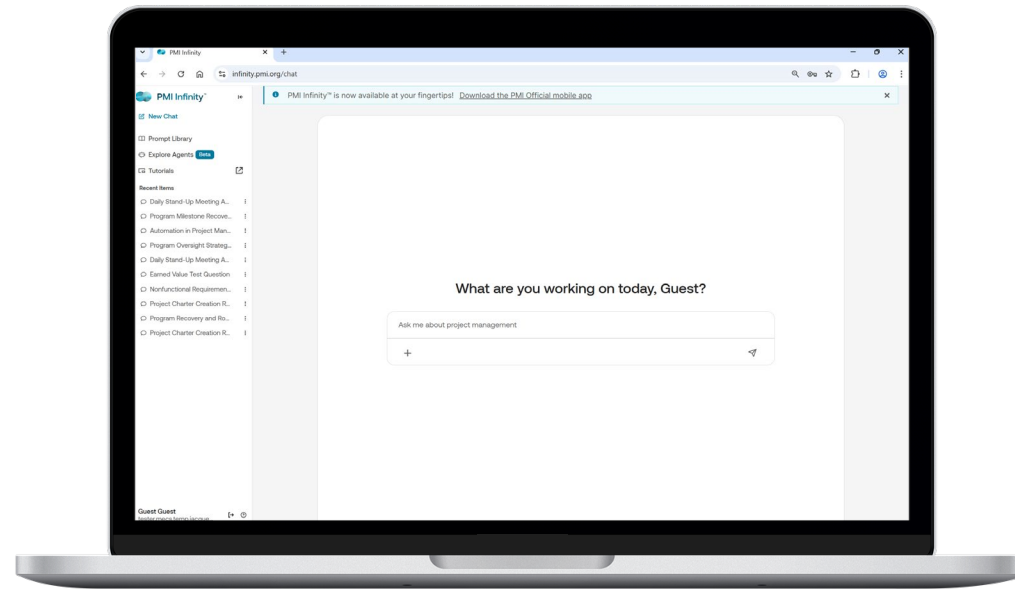
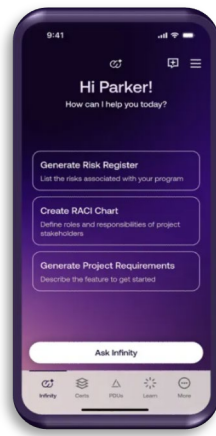
- What Infinity is, when and why to use it, and how it works
- How to get started with Infinity
- How to get the most value from Infinity
- Workshop
- What's coming next
- How you can get involved

# Meet PMI Infinity™



# PMI Infinity is PMI's AI project coach—an AI product purpose-built for project managers

Powered by multiple leading AI models and grounded in global standards from PMI, Infinity delivers secure, project-specific guidance you can trust, available online and in the PMI Official mobile app.



# PMI Infinity helps you apply PMI standards and guidance to real project challenges

Infinity uses PMI guidance to help you tackle project challenges.

Power users turn to Infinity to:

- Draft comms and documentation
- Get guidance on dealing with difficult stakeholders and delivering success under constraints
- Get input on managing time, budget, and priorities

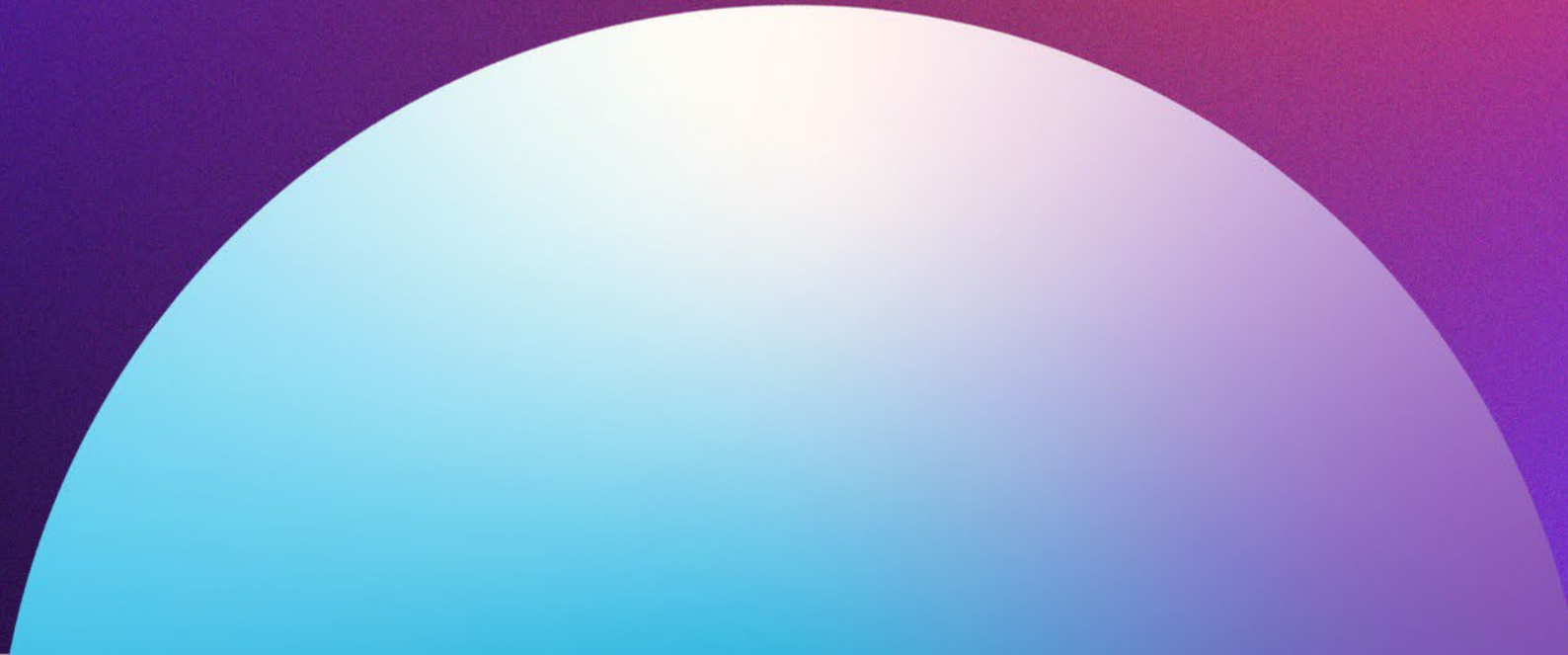


# PMI Infinity's private, secure, multi-model, agentic architecture helps it choose the best approach—and model—for each task

## When you use Infinity, know that it:

- **Uses leading models:** Infinity can use one or models to respond to you—including those from OpenAI, Google, and Cohere
- **Uses agents and models specific to your needs:** Infinity detects your intent and chooses the most appropriate agent to fulfill your request—whether you're thinking hard about a project challenge, creating or updating documents, or analyzing complex data
- **Keeps your information private and secure:** PMI abides by a strict privacy policy and does not allow its model providers train AI models using your data

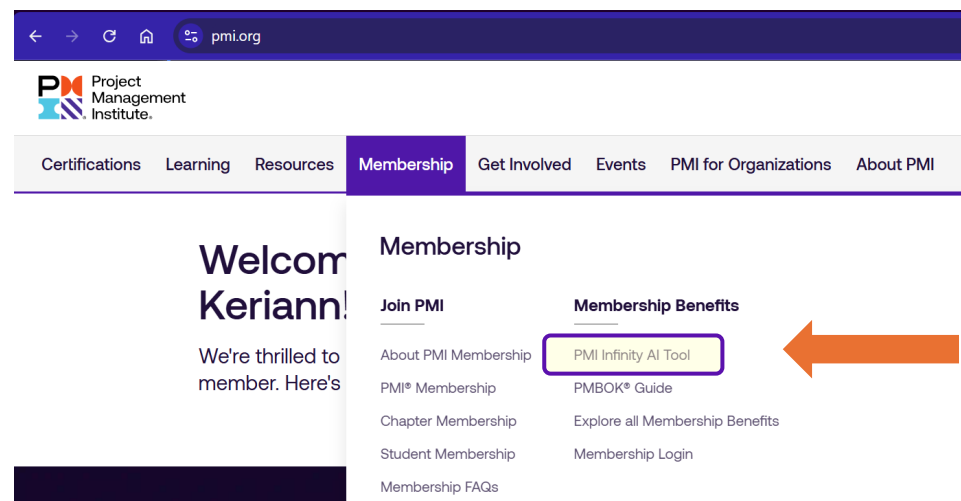
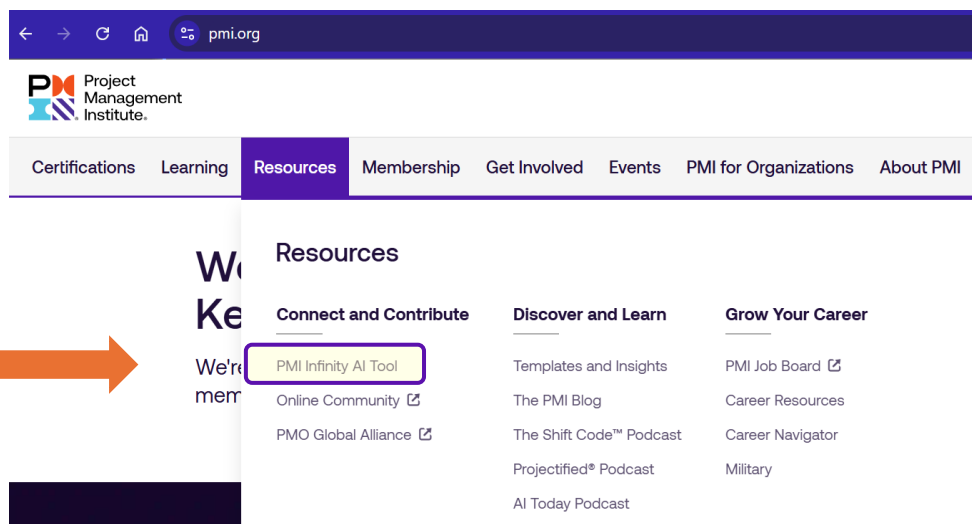
# Get started with PMI Infinity



# Easy ways to access PMI Infinity from [pmi.org](https://pmi.org)

1. Click **Resources** >  
Connect and Contribute

2. Click **Membership** >  
Membership Benefits



PMI Infinity is **free for [PMI members](#)** + available via **[30-day free trial](#)**

# Logged in-only ways to access PMI Infinity

3. Click the new **PMI Infinity** button

4. Access via your **MyPMI Dashboard**

The screenshot shows the PMI.org website interface for a logged-in user, Keriann Sabatini. The page features a navigation bar with links for Certifications, Learning, Resources, Membership, Get Involved, Events, PMI for Organizations, and About PMI. A search bar is also present. The main content area includes a welcome message: "Welcome back, Keriann! We're thrilled to have you as a member. Here's what's next: View this information plus other account details in [your account](#)." Below this, there is a promotional banner for PMI events with the text "Your next PMI event is closer than you think!" and "Step away from the screen and into the conversation. PMI". In the bottom left corner of the banner, there is a "PMI Infinity" button with a "New" tag, highlighted by an orange arrow. On the right side, the user profile dropdown menu is open, showing options like My Certifications, My Courses, My Events, My Subscriptions, Membership, Career Navigator, Account, Community Profile, Volunteer, and Log Out. The "Dashboard" option is highlighted with a purple border and an orange arrow pointing to it from the right.

# Ways to access PMI Infinity from your phone

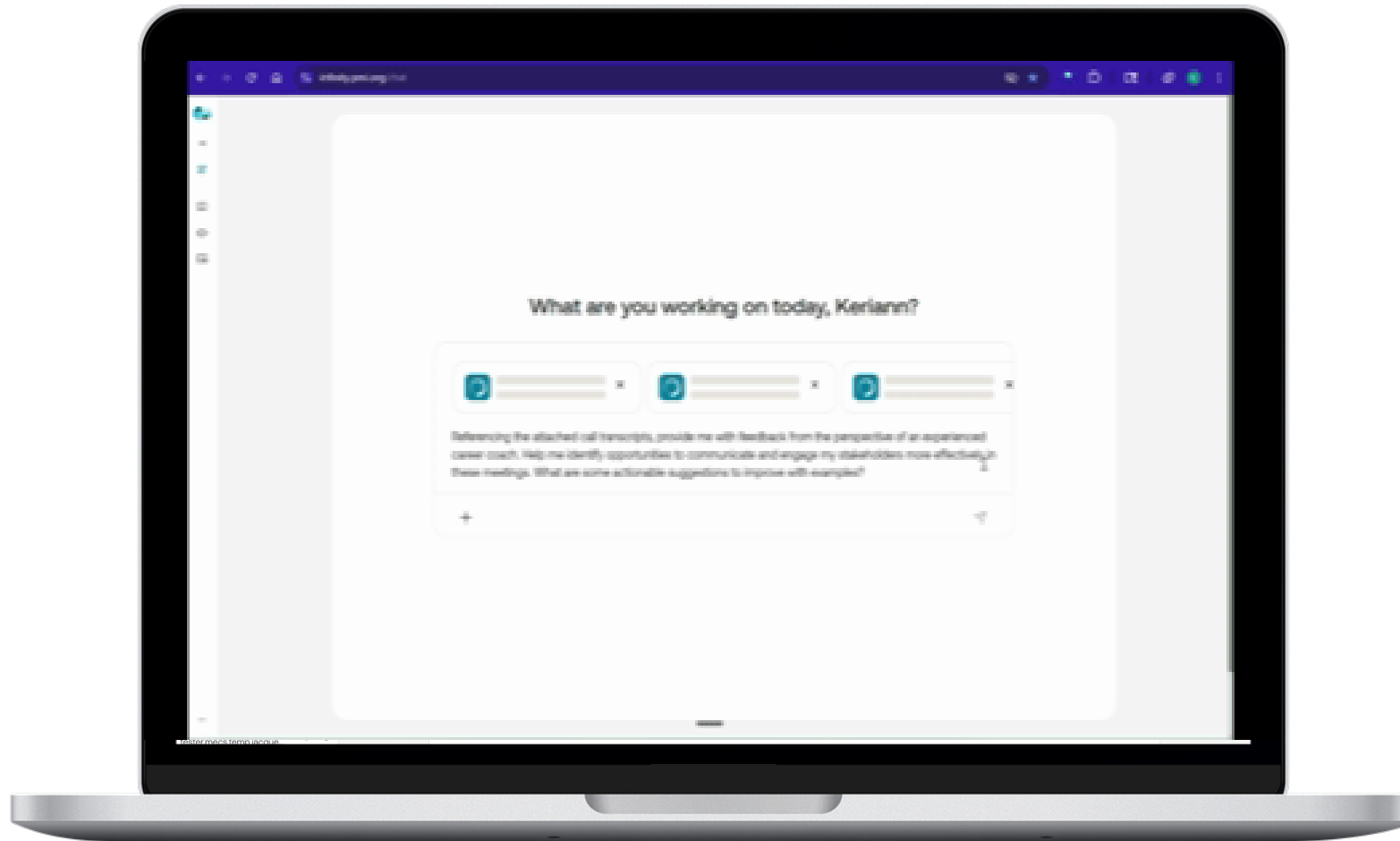
5. Apple App Store >  
download [PMI Official](#) app

6. Google Play Store >  
download [PMI Official](#) app

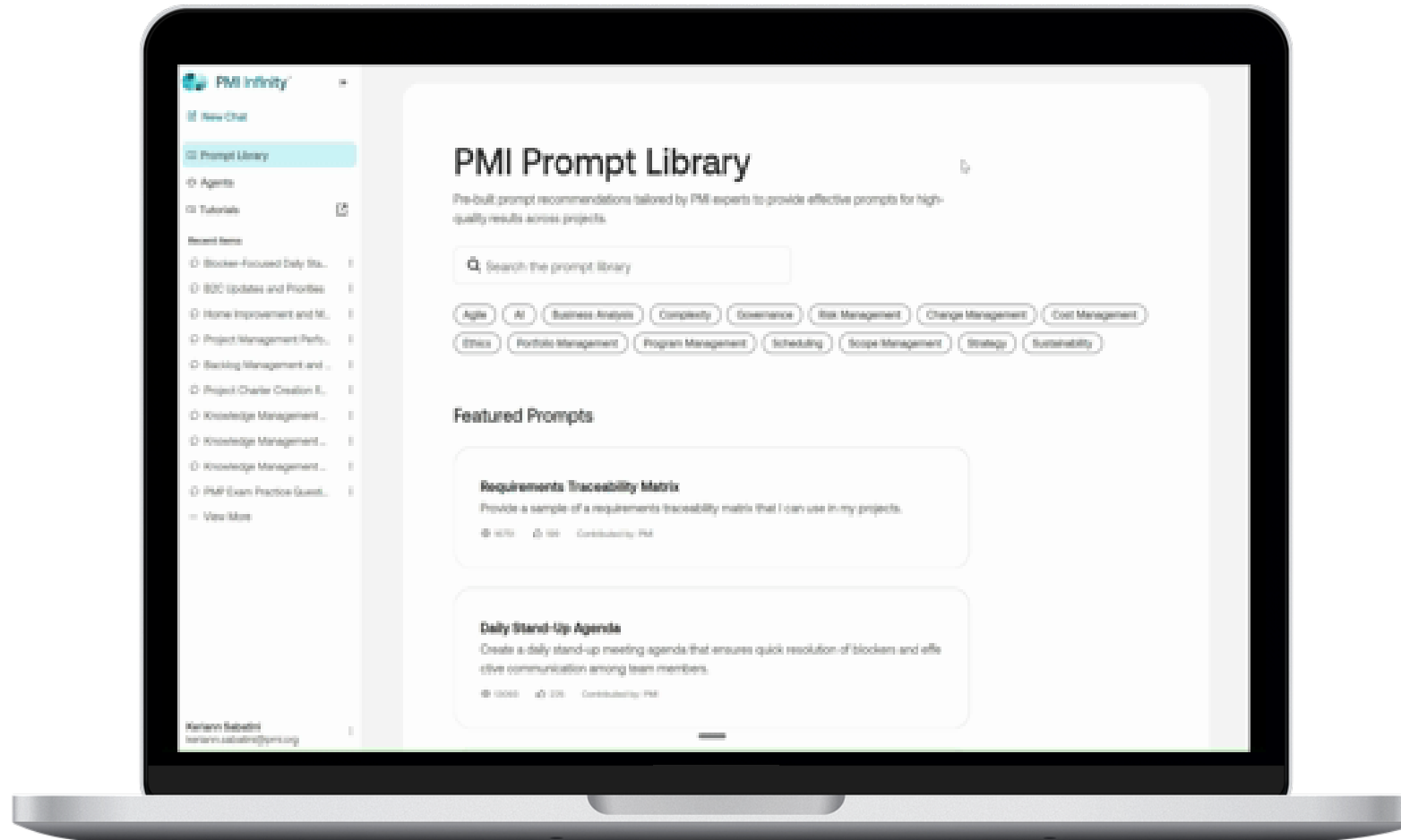


# 5 tips to get the most value from PMI Infinity

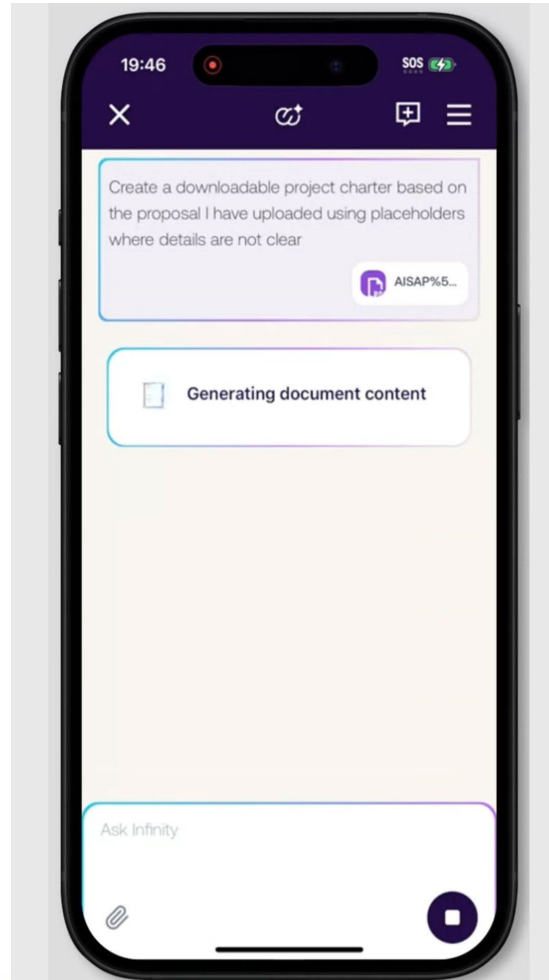
# 1. Get tailored, impactful responses by uploading multiple documents



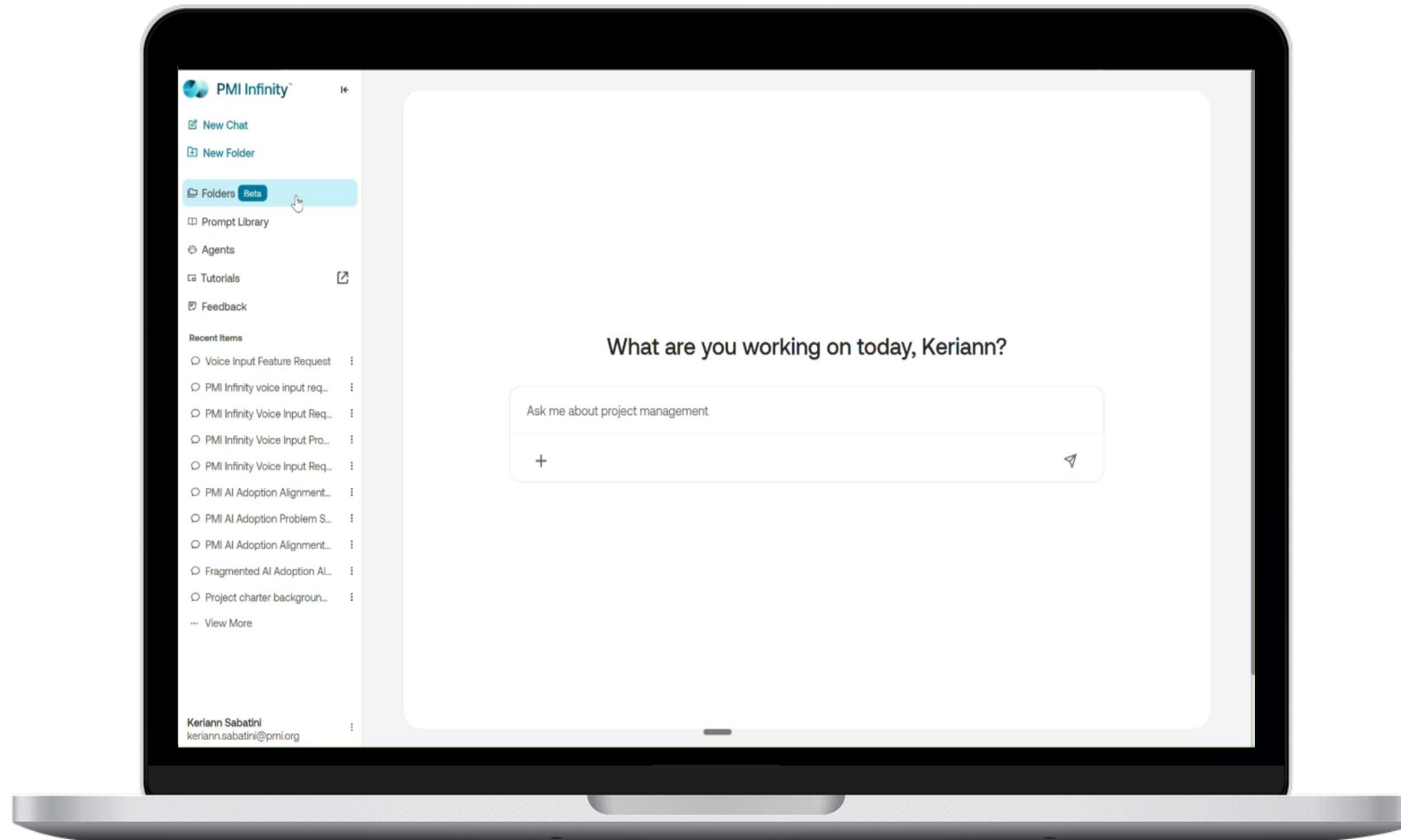
## 2. Get fast, relevant responses by adding your project details to templated prompts



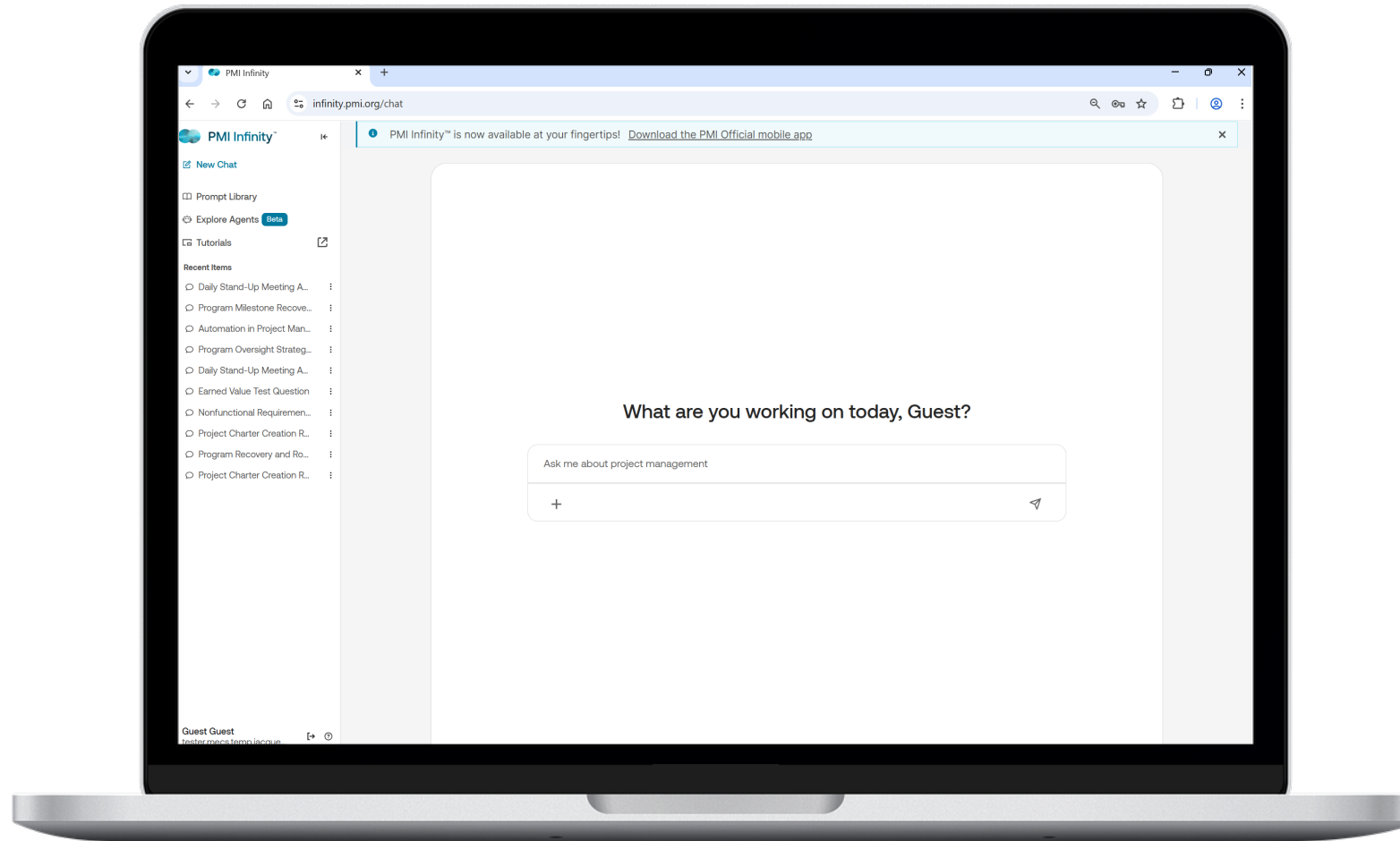
# 3. Create, preview, and download project docs grounded in PMI guidance



# 4. Create and populate Folders so you never have to start from 0 again



# 5. Ask Infinity what it can help you do on your projects!



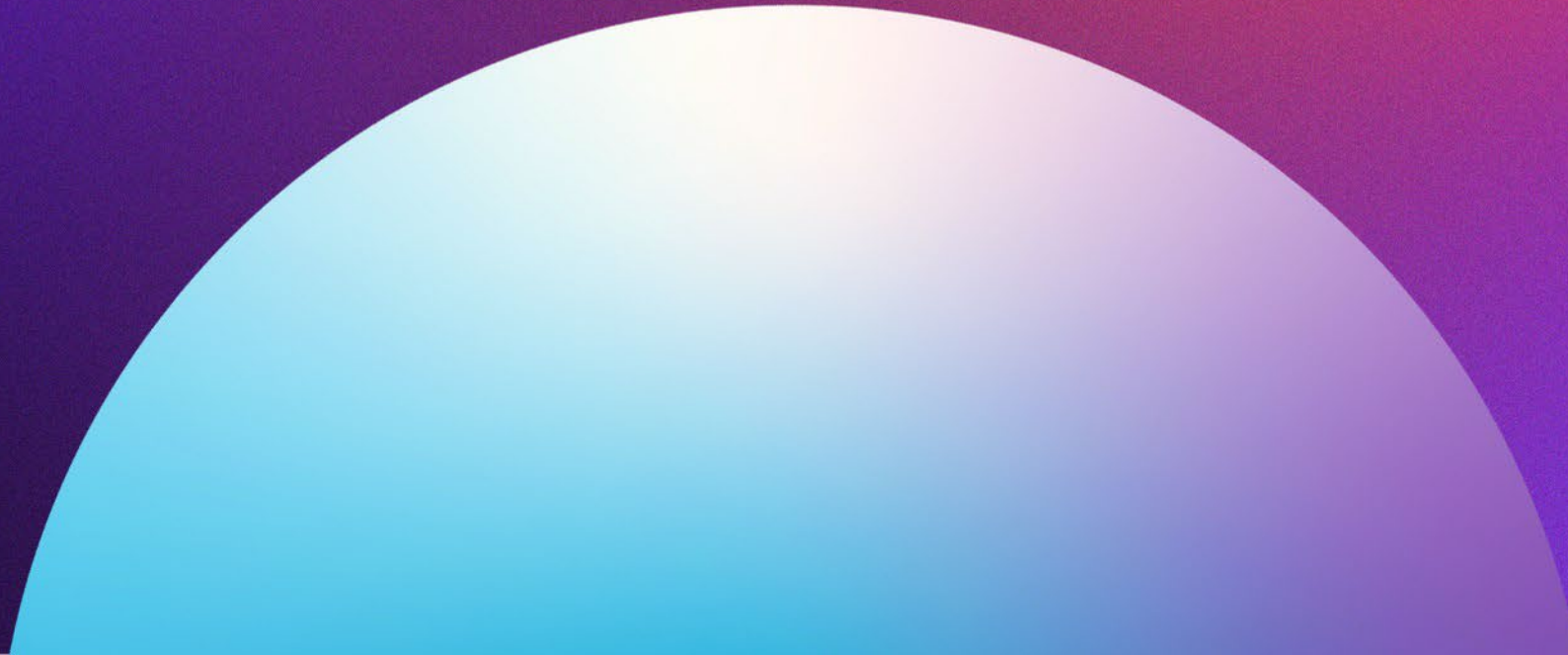
# Summary: our 5 tips and where to use them

Tip to benefit from Infinity	Where to find it
Get tailored, impactful responses by uploading multiple documents	<a href="#">Infinity Chat</a>
Get fast, relevant responses by adding your project details to templated prompts	<a href="#">Prompt Library</a>
Create, preview, and download project docs grounded in PMI guidance	<a href="#">Agents</a> page or <a href="#">Infinity Chat</a>
Create and populate Folders so you never have to start from 0 again	<a href="#">Folders</a>
Ask Infinity what it can help you do on your projects!	<a href="#">Infinity Chat</a>

# Remember, Infinity...

- 1 Is built to apply PMI guidance to your workflow**  
Infinity wants to help you find project success. While it can answer non-project related questions, that is not where it excels.
- 2 Is not a search engine**  
This is a conversation. You can tell Infinity it was wrong, ask it to provide more evidence, to think harder about its answer, or even create something for you.
- 3 Can identify project risks**  
Upload your project documents and ask Infinity to find risks and suggest mitigations.
- 4 Can help you manage project information**  
Create a folder, provide instructions, upload documents, and see how Infinity can guide you.
- 5 Is incredibly secure**  
All of our models are in a walled garden only PMI has access to. No information is ever used for training third-party models.

# Workshop



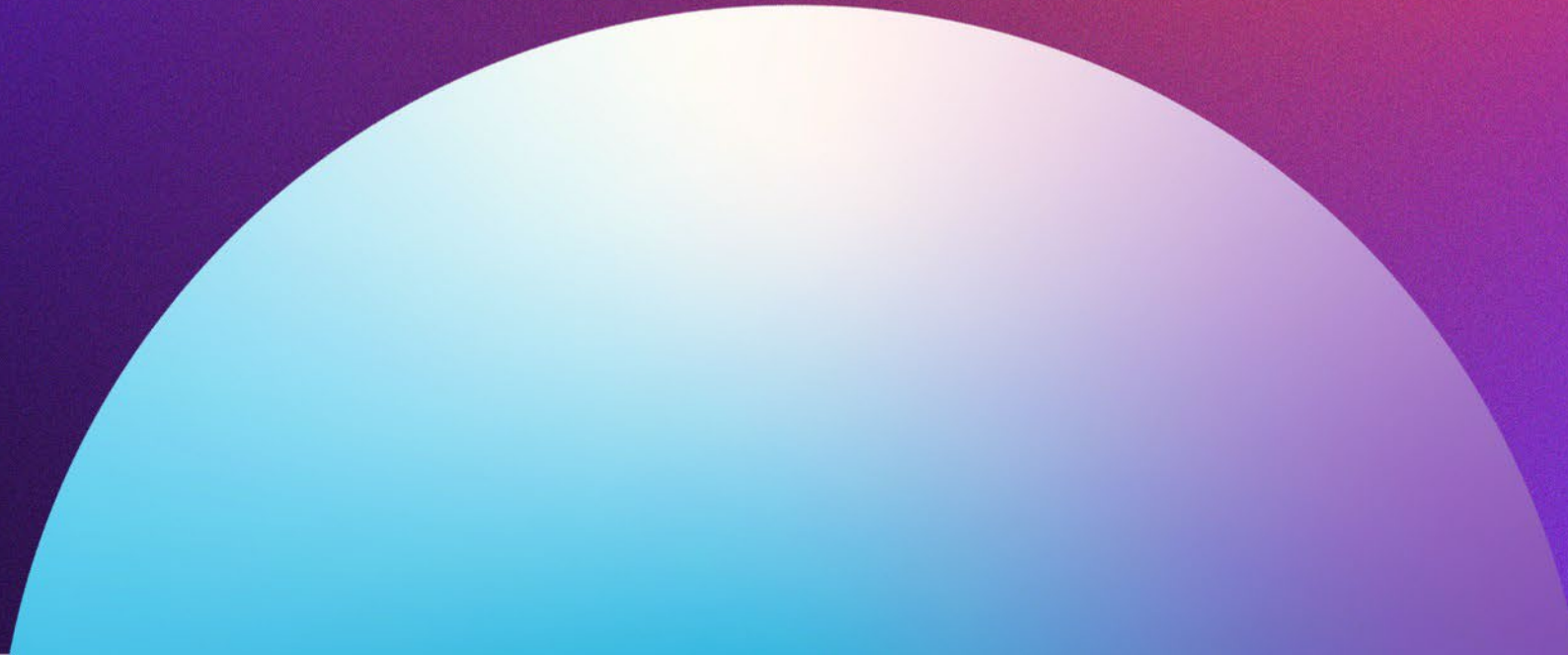
# On your own: Create a Folder to keep track of your learnings and insights from this week

1. Click + New Folder in the main navigation, then create and name your first folder.
2. Within your folder, upload any text documents you receive this week (e.g., Project Success and M.O.R.E. PDF files).
3. Add instructions about the purpose of the folder and how you want Infinity to respond.
4. Use this as a repository to help refresh your memory on PMI's latest updates, plan chapter programming, and more.

# In a group: Tell Infinity what you've learned so far at LIM and get actionable steps to apply it

1. In groups, reflect on the most useful sessions so far at LIM.
  - Which session impacted each of you the most?
2. On your own, create a chat within your Infinity Folder:
  - Describe the session you picked and what you learned from it. Ask Infinity to suggest actionable steps that you and your Chapter team can take to implement what you've learned.
    - Note: Providing details about your team and how you work helps!
3. If you find Infinity's action plan helpful, ask Infinity to turn it into a document or email to share with your Chapter team, getting your group's input to iterate and refine as needed.

# What's coming next for 2026



# 2026 Outcomes

For these outcomes to be successful, it must be **CLEAR** to the user, the user must **UNDERSTAND** how to engage with it, and the user must **TRUST** the outcome.

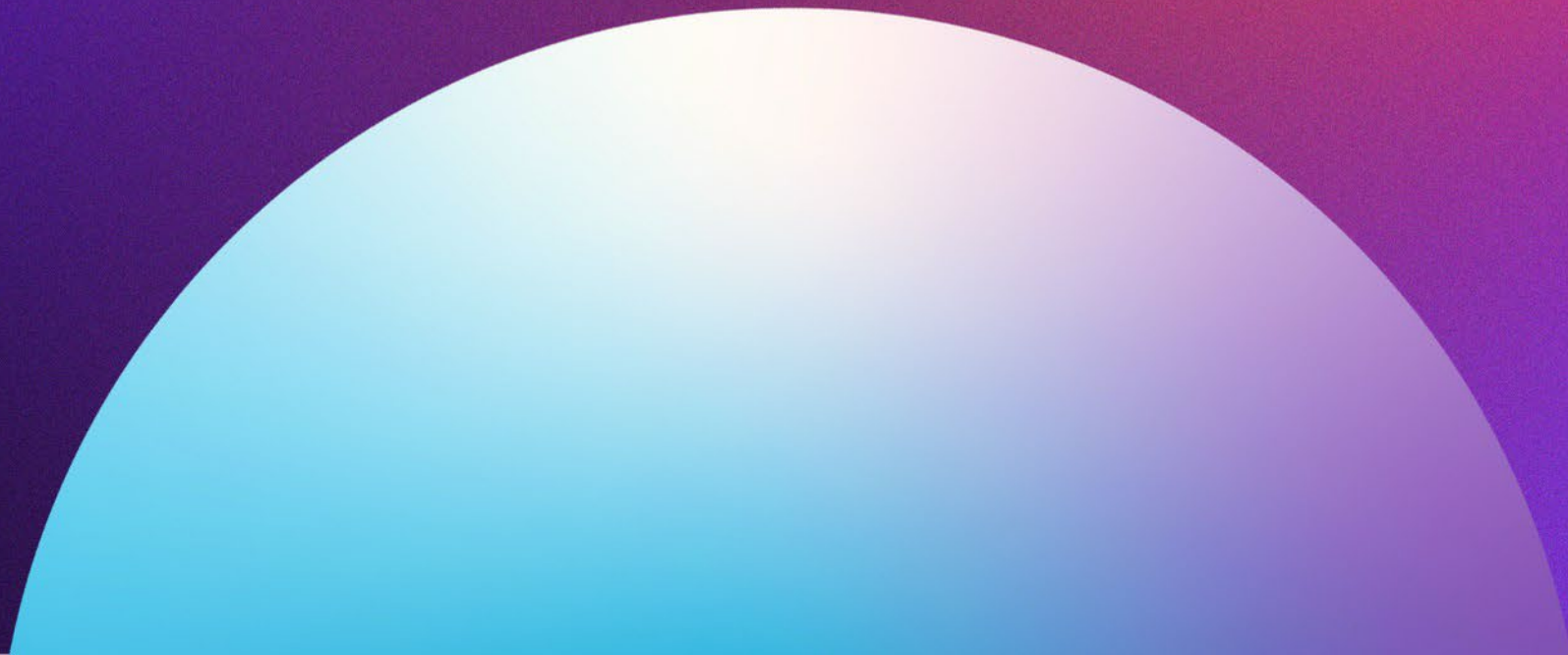
**Outcome 1**  
Apply PMI good practice to specific project management tasks

**Outcome 2**  
Securely ingest the information members use on a regular basis

**Outcome 3**  
Follow PMI good practices to surface risk

**Outcome 4**  
Consistently generate and iterate documents

# How you can get involved



# Get involved with PMI Infinity's evolution

- **Provide feedback via our Feedback form**
- **Volunteer for our user research studies**
- **Share feedback at events (like this one)**
- **Host a workshop with your Chapter**
- **Connect with us online**

# Questions?

